

F2 Product Description (March 2007)

F2 is a Medical Asset Management database that has been developed by **infoHealth** in collaboration with Plymouth, Torbay and Cardiff NHS Trusts. **F2** is a dynamic and innovative product which combines leading edge web technology (Microsoft ASP.NET / SQL Server) to cater for the operational demands of NHS personnel.

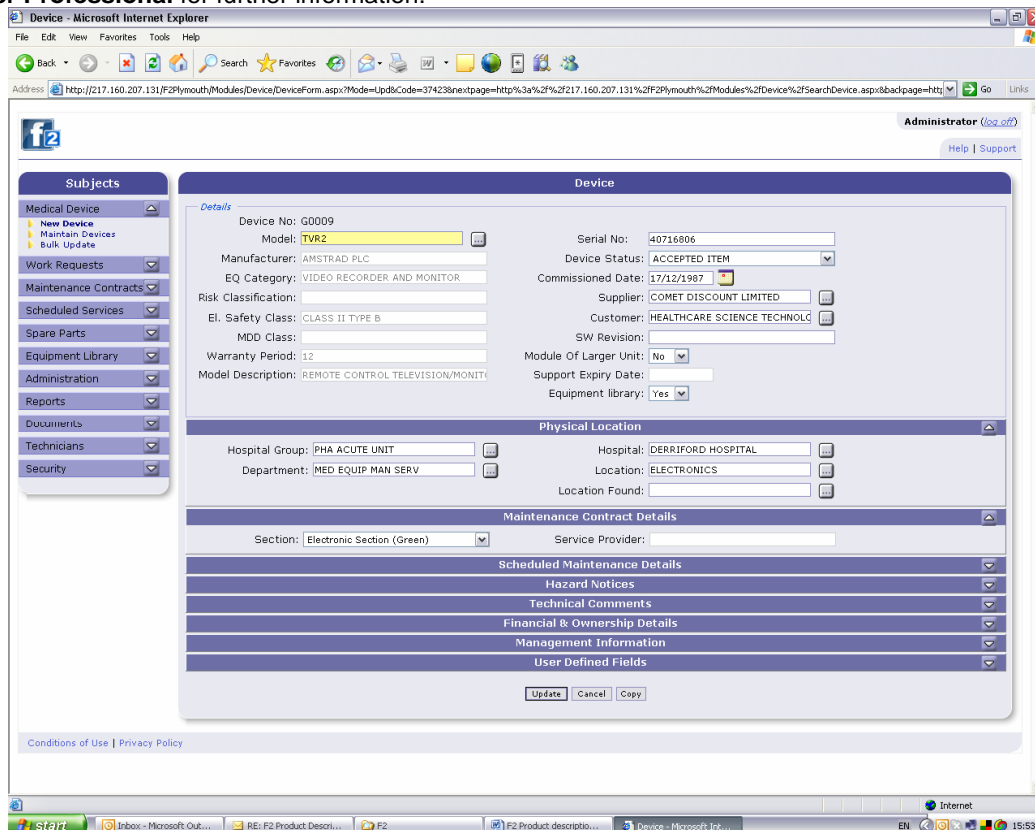
F2 is a Medical Asset Management database developed specifically for the NHS. **infoHealth** understands the pressures placed on Medical / Clinical Engineering departments to provide and disseminate information across the NHS in the 21st century.

F2 is a robust, database package that is both widely applicable to the Medical / Clinical Engineering operations but can also be adapted for the specific needs of individual NHS trusts.

Key Features

- Medical Device Management
- Work Requests (Call Logging & Repairs)
- Maintenance Contracts
- Scheduled Services (e.g. PPM)
- Spares/ Stock Control
- Document Management
- Equipment Library
- Clinical Staff Training Records
- System Audit / History
- Customised Reporting Environment (via F2 Adhoc Report Builder run-time)
- Integration to back-end systems (e.g., Microsoft Excel)
- Customisation via Role-based Access
- 100% Web-based Interface based on Microsoft Technology
- Data Migration from Legacy Systems (e.g., SEMS, FACTS, etc)

In addition to the F2 core functionality, the **F2 Adhoc Report Builder Professional** design tool can be purchased to allow an F2 system administrator to create and implement reports for F2 system users. Refer to the product description for **F2 Adhoc Report Builder Professional** for further information.



Note: Each key subject area within the F2 system is identified with collapsible menu panels on the left-hand side of the screen. Data maintenance, search and display is provided via screen panels on the right-hand side.

F2 Product Description (March 2007)

The Business Case

- **F2** incorporates all the main processes associated with the Medical Engineering operation - Device Management, Scheduled Services, etc – and will continue to incorporate extended features, such as Clinical Staff Training Records, Financial Reporting, etc. It will be possible to extend the functionality as required going forward, based on the changing needs within the NHS
- **F2** is implemented on user / role centric model and is readily customised. Individual trusts will be presented with the F2 modules that they require to do their job and not the 'clutter' of menu options, usually provided by packaged systems. In addition, a selection of user-defined fields have been included within **F2** to cater for short-term data requirements.
- **F2** can be extensively customised, using the **F2 Adhoc Report Builder Professional** design tool. With the design tool a system administrator will be able to generate adhoc reports and deploy to the **F2** Reporting environment. In addition, sophisticated reporting dashboards can be produced by the **F2** product support team.
- **F2** has a flexible Document Management capability. It is possible to store documents of various types (e.g., Hazard Notices / Medical Device Alerts, Worksheets, Manuals, etc.) against device models within the system. The documents are then retrieved by users within context in the system; for example, when a medical device is repaired via a work request then the associated device worksheet will be available via PDF.
- **F2** is developed using core Microsoft technologies (.NET & SQL Server) and is deployed via a web browser. Therefore no need to install **F2** software on PCs, with the associated maintenance issues.
- **F2** has the ability to migrate existing data in a seamless way from either bespoke or package systems (e.g., SEMS, OPTIM, FACTS, HECS and bespoke databases like Oracle, SQL Server, Paradox and C-ISAM).
- **F2** has also been designed to have wider applicability than Medical / Clinical Engineering departments. It is possible for the product to be adopted by associated departments within the organisation such as Radiology, Physiotherapy & Finance departments - enabling better integration and access to shared information across the trust.
- **F2** is cost effective. Highly competitive pricing models are available, including one-off license fees and annual leasing. **infoHealth** understands the need for the NHS to budget their IT spend carefully.

"infoHealth have migrated 100% of our legacy SEMS system data into F2 and fully customised features for us"
Mike Webber, Head of Medical Engineering, Derriford Hospital, Plymouth

infoHealth is a company that is dedicated to providing software solutions and ITC support within the Healthcare sector. We have been working with a number of NHS Trusts since 2000, including Hull, Torbay, Cardiff, Edinburgh and Plymouth. We have frequently seen the problems faced by Medical / Clinical Engineering departments when choosing the most appropriate Medical Asset Management database ... which is why **F2** has been developed.

Our working relationship with the NHS is fundamental to the f2 development process.

Peter Depla the Head of Medical Electronics at South Devon Healthcare Trust shares his f2 experience with us.

What does the future hold for **f2**?

I can see **f2** evolving into an integrated One Stop desktop application for the busy Medical Device Support technician/department . Being a totally web-based application allows for the ultimate in ease of deployment, with the database engine and application using the latest but equally proven Microsoft software tools.

To receive further information related to **F2** then please contact our Sales team:

Freephone: **+44 (0) 800 01 222 42**

Email: **sales@infohealth-solutions.com**